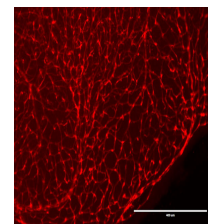


Product Datasheet

RFP (CHICKEN) Biotin Conjugated Antibody GRP4112

Description	Anti-RFP (CHICKEN) Biotin Conjugated Antibody
Species/Host	Chicken
Conjugation	Biotin
Tested Applications	ELISA, IF, WB
Form/Appearance	0.02 M Potassium Phosphate, 0.15 M Sodium Chloride, pH 7.2
Concentration	1.0 mg/mL
Note	For research use only.
Isotype	IgG
Clonality	Polyclonal
Source	The immunogen is a Red Fluorescent Protein (RFP) fusion protein corresponding to the full length amino acid sequence (234aa) derived from the mushroom polyp coral Discosoma.
Uniprot ID	Q9U6Y8
Dilution Range	ELISA: 1:10,000,IF Microscopy: 1:100,Western Blot: 1:1,000 - 1:3,000



Immunofluorescence
Microscopy
of Chicken Anti-RFP
antibody.