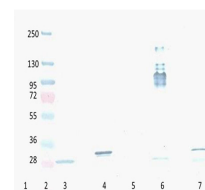


Product Datasheet

RFP (MOUSE) Monoclonal Antibody GRP2056

Description	Anti-RFP (MOUSE) Monoclonal Antibody
Species/Host	Mouse
Reactivity	Protein
Conjugation	Unconjugated
Tested Applications	ELISA, FC, IF, IP, WB
Form/Appearance	0.02 M Potassium Phosphate, 0.15 M Sodium Chloride, pH 7.2
Concentration	1.02 mg/ml
Note	For research use only.
Isotype	IgG2a
Clonality	Monoclonal
Purity	Anti-RFP Monoclonal Antibody was purified from concentrated tissue culture supernate by Protein A chromatography. Expect reactivity against RFP and its variants: mCherry, tdTomato, mBanana, mOrange, mPlum, mOrange and mStrawberry.
Source	Anti-RFP monoclonal antibody is a Red Fluorescent Protein (RFP) fusion protein corresponding to the full length amino acid sequence (234aa) derived from the mushroom polyp coral Discosoma.
Clone ID	8E5.G7
Dilution Range	ELISA: 1:75,000 - 1:150,000, Flow Cytometry: User Optimized, IF Microscopy: User Optimized, Immunoprecipitation: User Optimized, Western Blot: 1:1,000 - 1:10,000



Western Blot - Mouse
Anti-RFP
antibody