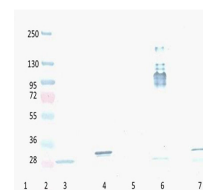


## Product Datasheet

### RFP (MOUSE) Monoclonal Antibody GRP2057

<b>Description</b>	Anti-RFP (MOUSE) Monoclonal Antibody
<b>Species/Host</b>	Mouse
<b>Reactivity</b>	Protein
<b>Conjugation</b>	Unconjugated
<b>Tested Applications</b>	ELISA, FC, IF, IP, WB
<b>Form/Appearance</b>	0.02 M Potassium Phosphate, 0.15 M Sodium Chloride, pH 7.2
<b>Concentration</b>	1.0 mg/ml
<b>Note</b>	For research use only.
<b>Isotype</b>	IgG2a
<b>Clonality</b>	Monoclonal
<b>Purity</b>	Anti-RFP Monoclonal Antibody was purified from concentrated tissue culture supernate by Protein A chromatography. Expect reactivity against RFP and its variants: mCherry, tdTomato, mBanana, mOrange, mPlum, mOrange and mStrawberry.
<b>Source</b>	Anti-RFP monoclonal antibody is a Red Fluorescent Protein (RFP) fusion protein corresponding to the full length amino acid sequence (234aa) derived from the mushroom polyp coral <i>Discosoma</i> .
<b>Clone ID</b>	8E5.G7
<b>Dilution Range</b>	ELISA: 1:75,000 - 1:150,000, Flow Cytometry: User Optimized, IF Microscopy: User Optimized, Immunoprecipitation: User Optimized, Western Blot: 1:1,000 - 1:10,000



Western Blot - Mouse  
Anti-RFP  
antibody