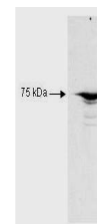


Product Datasheet

RFX5 (aa 320 to 494) (RABBIT) Antibody GRP2297

Description	Anti-RFX5 (aa 320 to 494) (RABBIT) Antibody
Species/Host	Rabbit
Reactivity	Human
Conjugation	Unconjugated
Tested Applications	ChIP, ELISA, SDS-PAGE, WB
Form/Appearance	0.02 M Potassium Phosphate, 0.15 M Sodium Chloride, pH 7.2
Concentration	1.0 mg/mL
Note	For research use only.
Isotype	IgG
Clonality	Polyclonal
Purity	RFXF5 antibody was prepared from monospecific antiserum by delipidation, salt fractionation and ion exchange chromatography. Anti-RFX5 (aa 320 to 494) may react with unknown minor bands at 65 kDa and 80 kDa.
Source	RFX5 peptide corresponding to a region at amino acids 320 to 494 of the human protein conjugated to Keyhole Limpet Hemocyanin (KLH).
Uniprot ID	P48382
Entrez	https://www.ncbi.nlm.nih.gov/gene//5993
Dilution Range	ELISA: 1:5,000 - 1:25,000,ChIP: User Optimized,Gel Shift: 0.5 µL to 1.0 µL,Western Blot: 1:1,000



Western Blot - Anti-RFX5 antibody