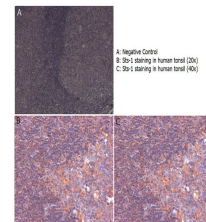


Product Datasheet

Sts-1 (RABBIT) Antibody GRP3496

Description	Anti-Sts-1 (RABBIT) Antibody
Species/Host	Rabbit
Reactivity	Human, Mouse
Conjugation	Unconjugated
Tested Applications	ELISA, IF, IHC-P, WB
Form/Appearance	0.02 M Potassium Phosphate, 0.15 M Sodium Chloride, pH 7.2
Concentration	0.95 mg/mL
Note	For research use only.
Isotype	IgG
Clonality	Polyclonal
Source	This affinity purified antibody was prepared from whole rabbit serum produced by repeated immunizations with a synthetic peptide corresponding to the C-terminus of mouse Sts-1.
Uniprot ID	Q8TF42
Entrez	https://www.ncbi.nlm.nih.gov/gene//84959
Dilution Range	ELISA: 1:2,000 - 1:10,000, Immunochemistry: 4µg /ml, IF Microscopy: User Optimized, Western Blot: 1:500 - 1:3,000
Application Notes	This affinity purified antibody has been tested for use in ELISA, IHC, and by western blot. Specific conditions for reactivity should be optimized by the end user. Expect a band



Anti-Sts-1 Antibody -
Immunohistochemistry