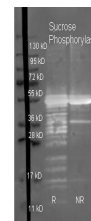


Product Datasheet

SUCROSE PHOSPHORYLASE (E.coli) (GOAT) Antibody Biotin Conjugated GRP1956

Species/Host	Goat
Reactivity	E.Coli
Conjugation	Biotin
Tested Applications	ELISA, IP, WB
Form/Appearance	0.02 M Potassium Phosphate, 0.15 M Sodium Chloride, pH 7.2
Concentration	1.0 mg/mL
Note	For research use only.
Isotype	IgG
Clonality	Polyclonal
Source	Sucrose Phosphorylase [E.coli]
Uniprot ID	P76041
Entrez	https://www.ncbi.nlm.nih.gov/gene//4492194
Dilution Range	ELISA: 1:5,000 - 1:20,000, Immunoprecipitation: 1:100, Western Blot: 1:500 - 1:5,000



Sucrose Phosphorylase
Polyclonal
Antibody-Western
blot