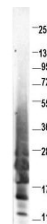


Product Datasheet

Swine IL-13 (RABBIT) Antibody GRP2340

| | |
|----------------------------|---|
| Description | Anti-Swine IL-13 (RABBIT) Antibody |
| Species/Host | Rabbit |
| Reactivity | Pig, Bovine, Sheep |
| Conjugation | Unconjugated |
| Tested Applications | ELISA, WB |
| Form/Appearance | 0.02 M Potassium Phosphate, 0.15 M Sodium Chloride, pH 7.2 |
| Concentration | 1.0 mg/mL |
| Note | For research use only. |
| Isotype | IgG |
| Clonality | Polyclonal |
| Source | This protein-A purified antibody was prepared from whole rabbit serum produced by repeated immunizations with full length recombinant protein raised in yeast, corresponding to mature swine IL-13 protein. |
| Uniprot ID | B3GDZ5 |
| Entrez | https://www.ncbi.nlm.nih.gov/gene//396721 |
| Dilution Range | ELISA: 1:11,000,Western Blot: 1.5 to 2 µg /ml |



Anti-Swine IL-13 Antibody
Western Blot