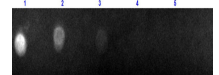


## Product Datasheet

# F(ab')<sub>2</sub> GOAT IgG [H&L] (RABBIT) Antibody Conjugated GRP5445

<b>Description</b>	F(ab') <sub>2</sub> Anti-GOAT IgG [H&L] (RABBIT) Antibody Conjugated
<b>Species/Host</b>	Rabbit
<b>Reactivity</b>	Goat
<b>Conjugation</b>	Texas Red
<b>Tested Applications</b>	IF
<b>Form/Appearance</b>	0.02 M Potassium Phosphate, 0.15 M Sodium Chloride, pH 7.2
<b>Concentration</b>	1 mg/mL
<b>Note</b>	For research use only.
<b>Isotype</b>	IgG F(ab') <sub>2</sub>
<b>Clonality</b>	Polyclonal
<b>Source</b>	Goat IgG whole molecule
<b>Dilution Range</b>	Fluorochrome: 2.48, IF Microscopy: 1:500-1:2,500



Dot Blot of F(ab')<sub>2</sub> Rabbit Anti-Goat IgG (H&L) Antibody Texas Red™ Conjugated