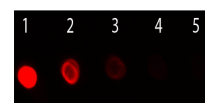


Product Datasheet

F(ab')₂ HORSE IgG [H&L] (RABBIT) Antibody Phycoerythrin conjugated GRP5489

Description	F(ab') ₂ Anti-HORSE IgG [H&L] (RABBIT) Antibody Phycoerythrin conjugated
Species/Host	Rabbit
Reactivity	Horse
Conjugation	RPE
Tested Applications	FC, IF
Form/Appearance	0.02 M Potassium Phosphate, 0.15 M Sodium Chloride, pH 7.2
Concentration	0.5 mg/mL
Note	For research use only.
Isotype	IgG F(ab') ₂
Clonality	Polyclonal
Source	Horse IgG whole molecule
Dilution Range	Flow Cytometry: 1:100-1:250,IF Microscopy: 1:100-1:250



Fab2 Horse IgG Antibody
Phycoerythrin Conjugated
- Dot
Blot