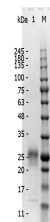


Product Datasheet

F(ab')₂ MOUSE IgG (H&L) (RABBIT) Antibody Min X Human Serum Proteins GRP10063

Description	F(ab') ₂ Anti-MOUSE IgG (H&L) (RABBIT) Antibody Min X Human Serum Proteins
Species/Host	Rabbit
Conjugation	Unconjugated
Tested Applications	ELISA, IHC-P, WB
Form/Appearance	0.02 M Potassium Phosphate, 0.15 M Sodium Chloride, pH 7.2
Concentration	1.0 mg/mL
Note	For research use only.
Isotype	IgG F(ab') ₂
Clonality	Polyclonal
Source	Anti-Mouse IgG was produced by repeated immunization with Mouse IgG whole molecule in goat.
Dilution Range	ELISA: 1:2,000 - 1:20,000, Immunochemistry: 1:1,000 - 1:5,000, Western Blot: 1:1,000 - 1:10,000



Fab2 Rabbit anti-mouse IgG SDS