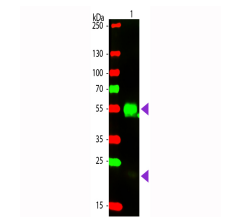


Product Datasheet

F(ab')₂ RABBIT IgG [H&L] (DONKEY) Antibody Phycoerythrin conjugated Min X Bv Ch Gt GP Ham Hs Hu Ms Rt & Sh Serum Proteins GRP10114

Description	F(ab') ₂ Anti-RABBIT IgG [H&L] (DONKEY) Antibody Phycoerythrin conjugated Min X Bv Ch Gt GP Ham Hs Hu Ms Rt & Sh Serum Proteins
Species/Host	Donkey
Reactivity	Rabbit
Conjugation	RPE
Tested Applications	FC, IF, IHC-P, WB
Form/Appearance	0.02 M Potassium Phosphate, 0.15 M Sodium Chloride, pH 7.2
Concentration	0.5 mg/mL
Note	For research use only.
Isotype	IgG F(ab') ₂
Clonality	Polyclonal
Source	Fab ₂ Anti-Rabbit IgG was produced by repeated immunization with Rabbit IgG whole molecule in donkey.
Dilution Range	Flow Cytometry: 1:100 - 1:250, Immunochimistry: User Optimized, IF Microscopy: 1:100 - 1:200, Western Blot: 1:1,000



WB - F(ab')₂ RABBIT IgG [H&L]
Antibody Phycoerythrin conjugated Pre-adsorbed