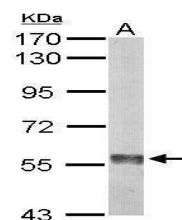


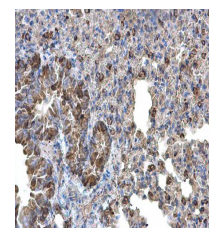
Product Datasheet

Monoamine Oxidase B antibody [N2C3] GRP118

Description	The protein encoded by this gene belongs to the flavin monoamine oxidase family. It is a enzyme located in the mitochondrial outer membrane. It catalyzes the oxidative deamination of biogenic and xenobiotic amines and plays an important role in the metabolism of neuroactive and vasoactive amines in the central nervous system and peripheral tissues. This protein preferentially degrades benzylamine and phenylethylamine. [provided by RefSeq]
Species/Host	Rabbit
Reactivity	Human, Mouse
Conjugation	Unconjugated
Tested Applications	ELISA, ICC, IF, IHC-P, WB
Immunogen	Recombinant protein encompassing a sequence within the center region of human Monoamine Oxidase B. The exact sequence is proprietary.
Form/Appearance	Liquid: 1XPBS, 20% Glycerol (pH7). 0.025% ProClin 300 was added as a preservative.
Concentration	0.88 mg/ml
Storage	Store as concentrated solution. Centrifuge briefly prior to opening vial. For short-term storage (1-2 weeks), store at 4°C. For long-term storage, aliquot and store at -20°C or below. Avoid multiple freeze-thaw cycles.
Note	For research use only.
Isotype	IgG
Clonality	Polyclonal
Purity	Purified by antigen-affinity chromatography.
Uniprot ID	P27338
Entrez	4129
Dilution Range	WB: 1:500-1:3000, ICC: 1:100-1:1000, IHC-P: 1:100-1:1000, ELISA: 1:1000-1:10000



Sample (50 µg of whole cell lysate) A: Mouse liver 7.5% SDS PAGE GRP570 diluted at 1:1000 The HRP-conjugated anti-rabbit IgG antibody was used to detect the primary antibody.



Monoamine Oxidase B antibody [N2C3] detects Monoamine Oxidase B protein at cytoplasm on mouse lung by immunohistochemical analysis. Sample: Paraffin-embedded mouse lung. Monoamine Oxidase B antibody [N2C3] (GRP570) diluted at 1:500.