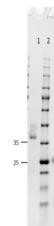


Product Datasheet

Fab MOUSE IgG (H&L) (GOAT) Antibody GRP10273

Description	Fab Anti-MOUSE IgG (H&L) (GOAT) Antibody
Species/Host	Goat
Reactivity	Mouse
Conjugation	Unconjugated
Tested Applications	ELISA, IHC-P, WB
Form/Appearance	0.02 M Potassium Phosphate, 0.15 M Sodium Chloride, pH 7.2
Concentration	1.0 mg/ml
Storage	Store vial at 4 °C prior to opening. This product is stable at 4 °C as an undiluted liquid. Dilute only prior to immediate use.
Note	For research use only.
Isotype	IgG Fab
Clonality	Polyclonal
Source	Anti-Mouse IgG (H&L) antibody was produced by repeated immunization with mouse IgG whole molecule in goat.
Dilution Range	ELISA: 1:15,000, Immunochemistry: 1:1,000 - 1:5,000, Western Blot: 1:2,000 - 1:10,000



SDS-PAGE of Fab
Anti-Mouse IgG
Antibody