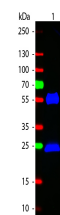


Product Datasheet

Fluorescein Conjugated Affinity Purified MOUSE IgG (H&L) (GOAT) GRP4730

Description	Fluorescein Conjugated Affinity Purified Anti-MOUSE IgG (H&L) (GOAT)
Species/Host	Goat
Reactivity	Mouse
Conjugation	FITC
Tested Applications	FC, IF, IHC-P, WB
Form/Appearance	0.02 M Potassium Phosphate, 0.15 M Sodium Chloride, pH 7.2
Concentration	1.0 mg/mL
Note	For research use only.
Isotype	IgG
Clonality	Polyclonal
Source	Mouse IgG whole molecule
Dilution Range	FLISA: 1:10,000 - 1:50,000, Flow Cytometry: 1:500 - 1:2,500, Fluorochrome: 3.6, IF Microscopy: 1:1,000 - 1:5,000, Western Blot: User Optimized



WB - Fluorescein Conjugated Mouse IgG (H&L)