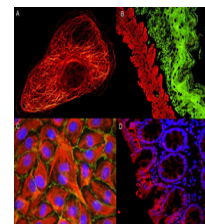


## Product Datasheet

### STREPTAVIDIN ATTO 425 Conjugated GRP10340

<b>Description</b>	STREPTAVIDIN ATTO 425 Conjugated
<b>Conjugation</b>	ATTO-425
<b>Tested Applications</b>	IF, IHC-P, WB
<b>Form/Appearance</b>	0.02 M Potassium Phosphate, 0.15 M Sodium Chloride, pH 7.2
<b>Concentration</b>	1.0 mg/mL
<b>Note</b>	For research use only.
<b>Purity</b>	STREPTAVIDIN ATTO 425 was prepared from chromatographically purified Streptavidin. Assay by immunoelectrophoresis resulted in a single precipitin arc against anti-Streptavidin. No reaction was observed against anti-Avidin.
<b>Dilution Range</b>	FLISA: >1:20,000, Fluorochrome: 3.5, IF Microscopy: >1:5,000, Western Blot: >1:10,000
<b>Application Notes</b>	The emission spectra for this ATTO conjugate matches the principle output wavelengths of most common fluorescence instrumentation.



STREPTAVIDIN ATTO  
425  
Conjugated