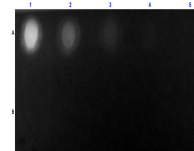


## Product Datasheet

### STREPTAVIDIN Fluorescein Conjugated GRP10333

<b>Description</b>	STREPTAVIDIN Fluorescein Conjugated
<b>Conjugation</b>	FITC
<b>Tested Applications</b>	FC, IF, IHC-P
<b>Form/Appearance</b>	0.02 M Potassium Phosphate, 0.15 M Sodium Chloride, pH 7.2
<b>Concentration</b>	1.0 mg/mL
<b>Note</b>	For research use only.
<b>Purity</b>	This product was prepared from chromatographically pure Streptavidin. Assay by immunoelectrophoresis resulted in a single precipitin arc against anti-Fluorescein and anti-Streptavidin.
<b>Dilution Range</b>	FLISA: 1:10,000 - 1:50,000, Flow Cytometry: 1:500 - 1:2,500, Fluorochrome: 2.2, IF Microscopy: 1:1,000 - 1:5,000



Dot Blot of  
STREPTAVIDIN  
Fluorescein Conjugated.