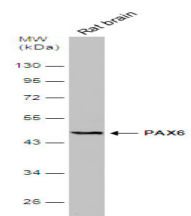


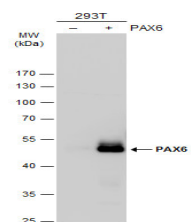
## Product Datasheet

### PAX6 antibody GRP137

<b>Description</b>	This gene encodes paired box gene 6, one of many human homologs of the <i>Drosophila melanogaster</i> gene <i>prd</i> . In addition to the hallmark feature of this gene family, a conserved paired box domain, the encoded protein also contains a homeo box domain. Both domains are known to bind DNA, and function as regulators of gene transcription. This gene is expressed in the developing nervous system, and in developing eyes. Mutations in this gene are known to cause ocular disorders such as aniridia and Peter's anomaly. Alternatively spliced transcript variants encoding either the same or different isoform have been found for this gene. [provided by RefSeq]
<b>Species/Host</b>	Rabbit
<b>Reactivity</b>	Human, Mouse, Rat
<b>Conjugation</b>	Unconjugated
<b>Tested Applications</b>	ICC, IF, IHC-Fr, IHC-P, IP, WB
<b>Immunogen</b>	Recombinant protein encompassing a sequence within the center region of human PAX6. The exact sequence is proprietary.
<b>Form/Appearance</b>	Liquid: 1XPBS, 20% Glycerol (pH7). 0.025% ProClin 300 was added as a preservative.
<b>Concentration</b>	0.85 mg/ml
<b>Storage</b>	Store as concentrated solution. Centrifuge briefly prior to opening vial. For short-term storage (1-2 weeks), store at 4°C. For long-term storage, aliquot and store at -20°C or below. Avoid multiple freeze-thaw cycles.
<b>Note</b>	For research use only.
<b>Isotype</b>	IgG
<b>Clonality</b>	Polyclonal
<b>Purity</b>	Purified by antigen-affinity chromatography.
<b>Uniprot ID</b>	<b>P26367</b>
<b>Entrez</b>	<b>5080</b>
<b>Dilution Range</b>	WB: 1:500-1:3000, ICC: 1:100-1:1000, IHC-P: 1:100-1:1000, IHC-Fr: 1:100-1:1000, IP: 1:1000-1:1000



Rat tissue extract (50 µg) was separated by 10% SDS-PAGE, and the membrane was blotted with PAX6 antibody (GRP589) diluted at 1:500. The HRP-conjugated anti-rabbit IgG antibody was used to detect the primary antibody.



Non-transfected (â€“) and transfected (+) 293T whole cell extracts (30 µg) were separated by 10% SDS-PAGE, and the membrane was blotted with PAX6 antibody (GRP589) diluted at 1:1000. The HRP-conjugated anti-rabbit IgG antibody was used to detect the p