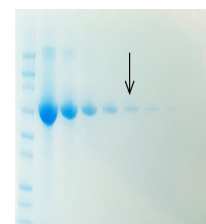


Product Datasheet

Der Blaue Jonas - Single-step Coomassie Blue protein gel dye - Sample Size - HS Code 38220000 - Diagnostikreagenzien, Laborreagenzien, GRP1S

Description	Der Blaue Jonas - a single-step Coomassie Blue protein gel dye Sample Size
Tested Applications	WB
Storage	4 degrees Celsius



Decreasing amounts of BSA were run on a 10% SDS-PAGE gel and stained with Der Blaue Jonas for 10 minutes. The arrow denotes the 100 ng BSA lane.