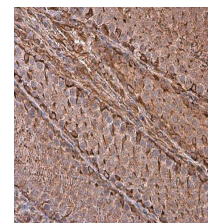


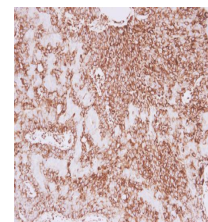
## Product Datasheet

### Vimentin antibody GRP13

<b>Description</b>	Along with the microfilaments (actins) and microtubules (tubulins), the intermediate filaments represent a third class of well-characterized cytoskeletal elements. The subunits display a tissue-specific pattern of expression. Desmin (MIM 125660) is the subunit specific for muscle and vimentin the subunit specific for mesenchymal tissue.[supplied by OMIM]
<b>Species/Host</b>	Rabbit
<b>Reactivity</b>	Human, Mouse, Rat
<b>Conjugation</b>	Unconjugated
<b>Tested Applications</b>	ELISA, ICC, IF, IHC-Fr, IHC-P, IP, WB
<b>Immunogen</b>	Recombinant protein encompassing a sequence within the centre region of human Vimentin. The exact sequence is proprietary.
<b>Form/Appearance</b>	Liquid: 1XPBS, 20% Glycerol (pH7). 0.025% ProClin 300 was added as a preservative.
<b>Concentration</b>	1.39 mg/ml
<b>Storage</b>	Store as concentrated solution. Centrifuge briefly prior to opening vial. For short-term storage (1-2 weeks), store at 4°C. For long-term storage, aliquot and store at -20°C or below. Avoid multiple freeze-thaw cycles.
<b>Note</b>	For research use only.
<b>Isotype</b>	IgG
<b>Clonality</b>	Polyclonal
<b>Purity</b>	Purified by antigen-affinity chromatography.
<b>Uniprot ID</b>	<b>P08670</b>
<b>Entrez</b>	<b>7431</b>
<b>Dilution Range</b>	WB: 1:5000-1:50000, ICC: 1:100-1:1000, IHC-P: 1:100-1:1000, IP: 1:100-1:500



Vimentin antibody detects Vimentin protein at cell membrane and cytoplasm in rat testis by immunohistochemical analysis. Sample: Paraffin-embedded rat testis. Vimentin antibody (GRP465) diluted at 1:500.



Vimentin antibody detects Vimentin protein at cytoplasm in human lung adenocarcinoma by immunohistochemical analysis. Sample: Paraffin-embedded human lung adenocarcinoma. Vimentin antibody (GRP465) diluted at 1:500.