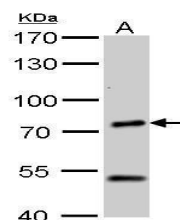


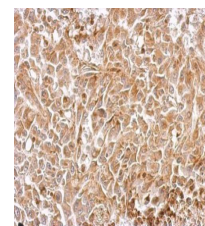
Product Datasheet

Chromogranin C antibody GRP150

Description	The protein encoded by this gene is a member of the chromogranin/secretogranin family of neuroendocrine secretory proteins. Studies in rodents suggest that the full-length protein, secretogranin II, is involved in the packaging or sorting of peptide hormones and neuropeptides into secretory vesicles. The full-length protein is cleaved to produce the active peptide secretoneurin, which exerts chemotaxic effects on specific cell types, and EM66, whose function is unknown. [provided by RefSeq]
Species/Host	Rabbit
Reactivity	Human, Mouse, Rat
Conjugation	Unconjugated
Tested Applications	ICC, IF, IHC-P, WB
Immunogen	Recombinant protein encompassing a sequence within the N-terminus region of human Chromogranin C. The exact sequence is proprietary.
Form/Appearance	Liquid: 1XPBS, 1% BSA, 20% Glycerol (pH7). 0.01% Thimerosal was added as a preservative.
Concentration	1 mg/ml
Storage	Store as concentrated solution. Centrifuge briefly prior to opening vial. For short-term storage (1-2 weeks), store at 4°C. For long-term storage, aliquot and store at -20°C or below. Avoid multiple freeze-thaw cycles.
Note	For research use only.
Isotype	IgG
Clonality	Polyclonal
Purity	Purified by antigen-affinity chromatography.
Uniprot ID	P13521
Entrez	7857
Dilution Range	WB: 1:500-1:3000, IHC-P: 1:100-1:1000



Chromogranin C antibody detects SCG2 protein by western blot analysis. A. 50 µg mouse brain lysate/extract. 7.5% SDS-PAGE. Chromogranin C antibody (GRP602) dilution: 1:500. The HRP-conjugated anti-rabbit IgG antibody was used to detect the primary antibody.



Chromogranin C antibody detects SCG2 protein at cytosol on RT2 xenograft by immunohistochemical analysis. Sample: Paraffin-embedded RT2 xenograft. Chromogranin C antibody (GRP602) dilution: 1:500.