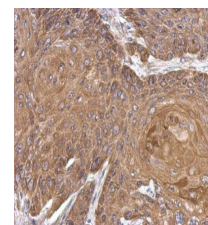


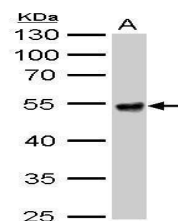
Product Datasheet

ALDH1A1 antibody GRP151

Description	This protein belongs to the aldehyde dehydrogenases family of proteins. Aldehyde dehydrogenase is the second enzyme of the major oxidative pathway of alcohol metabolism. Two major liver isoforms of this enzyme, cytosolic and mitochondrial, can be distinguished by their electrophoretic mobilities, kinetic properties, and subcellular localizations. Most Caucasians have two major isozymes, while approximately 50% of Orientals have only the cytosolic isozyme, missing the mitochondrial isozyme. A remarkably higher frequency of acute alcohol intoxication among Orientals than among Caucasians could be related to the absence of the mitochondrial isozyme. This gene encodes a cytosolic isoform, which has a high affinity for aldehydes. [provided by RefSeq]
Species/Host	Rabbit
Reactivity	Human, Mouse, Rat
Conjugation	Unconjugated
Tested Applications	ICC, IF, IHC-P, WB
Immunogen	Recombinant protein encompassing a sequence within the centre region of human ALDH1A1. The exact sequence is proprietary.
Form/Appearance	Liquid: 1XPBS, 1% BSA, 20% Glycerol (pH7). 0.01% Thimerosal was added as a preservative.
Concentration	1 mg/ml
Storage	Store as concentrated solution. Centrifuge briefly prior to opening vial. For short-term storage (1-2 weeks), store at 4°C. For long-term storage, aliquot and store at -20°C or below. Avoid multiple freeze-thaw cycles.
Note	For research use only.
Isotype	IgG
Clonality	Polyclonal
Purity	Purified by antigen-affinity chromatography.
Uniprot ID	P00352
Entrez	216
Dilution Range	WB: 1:1000-1:10000, ICC: 1:100-1:1000, IHC-P: 1:100-1:1000



Immunohistochemical analysis of paraffin-embedded Cal27 xenograft, using ALDH1A1 (GRP603) antibody at 1:500 dilution.



ALDH1A1 antibody detects ALDH1A1 protein by western blot analysis. A. 50 µg mouse liver lysate/extract 10% SDS-PAGE ALDH1A1 antibody (GRP603) dilution: 1:10000 The HRP-conjugated anti-rabbit IgG antibody was used to detect the primary antibody.