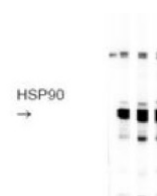


Product Datasheet

HSP90 - Heat shock protein 90 GRP12194

Species/Host	Rabbit
Reactivity	Human, Salmon
Predicted Reactivity	Fishes, Hen, Mammals
Tested Applications	WB
Immunogen	KLH-conjugated synthetic peptide chosen from a highly conserved region of hsp90 found in both the alpha P07900 and beta P08238 form of the protein. The target peptide is perfectly conserved in animals.
Form/Appearance	Lyophilized
Storage	Store lyophilized/reconstituted at -20°C; once reconstituted make aliquots to avoid repeated freeze-thaw cycles. Please, remember to spin tubes briefly prior to opening them to avoid any losses that might occur from lyophilized material adhering to the cap or sides of the tubes.
Note	For research use only.
Clonality	Polyclonal
Purity	Serum
MW	84-86 kDa
Uniprot ID	P07900 , P08238
Dilution Range	1 : 5 000 (WB)



Application Notes Additional Information: in salmonid fish a cross-reactive band at approximately 40 kDa is observed; antibody will also detect a human recombinant HSP90 protein. Antibody is reacting strongly with recombinant HSP90 from HELA cells. Background: HSP90 is a ubiquitous chaperone involved in numerous cellular processes. Members of this family of proteins play important roles in allowing a selected group of intracellular signaling molecules reach and maintain functionally active conformations. Alternative names: for hsp90 alpha: HSP 86, renal carcinoma antigen NY-REN-38, for hsp90 beta: hsp84 Reconstitution: For reconstitution add 100 µl of sterile water