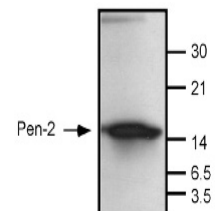


Product Datasheet

PEN2 - gamma-secretase subunit PEN-2 GRP12209

Species/Host	Rabbit
Reactivity	Human, Mouse, Hamster
Predicted Reactivity	Bovine, Xenopus laevis (Frog), Rat
Tested Applications	WB
Immunogen	The antibody was raised against the N-terminal eleven residues of human PEN-2. PEN-2 is the smallest component of the multi-protein gamma-secretase complex. Chosen synthetic peptide has been conjugated to KLH
Form/Appearance	Lyophilized
Storage	Store lyophilized/reconstituted at -20°C; once reconstituted make aliquots to avoid repeated freeze-thaw cycles. Please, remember to spin tubes briefly prior to opening them to avoid any losses that might occur from lyophilized material adhering to the cap or sides of the tubes.
Note	For research use only.
Clonality	Polyclonal
Purity	Affinity purified IgG
MW	15 kDa
Uniprot ID	Q9NZ42
Dilution Range	1 : 250 (WB)



Application Notes Additional Information: Approx. MW of the target protein is 15 kDa. Antibodies recognize also an unknown protein at around 40 kDa. Background: One characteristic feature of Alzheimer's disease is the deposition of amyloid-beta peptide (Abeta) as amyloid plaques within specific regions of the human brain. Abeta is derived from the amyloid-beta peptide precursor protein (beta-APP) by the intramembranous cleavage activity of gamma-secretase. PEN-2 (Q9NZ42) is a critical component of PS1/gamma secretase (Farmery et al. 2003; Bergman et al. 2004). Alternative name: presenilin enhancer protein 2 Reconstitution: For reconstitution add 83.3 µl of sterile water.