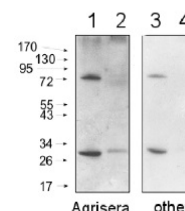


Product Datasheet

Goat anti-Rabbit IgG (H&L), HRP conjugated GRP12232

Species/Host	Goat
Reactivity	Rabbit
Tested Applications	ELISA, WB, IHC
Immunogen	Purified Rabbit IgG, whole molecule.
Form/Appearance	Lyophilized
Storage	Store lyophilized material at 2-8°C. For long time storage after reconstitution, dilute the antibody solution with glycerol to a final concentration of 50% glycerol and store as liquid at -20°C, to prevent loss of enzymatic activity. For example, if you have reconstituted 1 mg of antibody in 1.1 ml of sterile water add 1.1 ml of glycerol. Such solution will not freeze in -20°C. If you are using a 1:5000 dilution prior to diluting with glycerol, then you would need to use a 1:2500 dilution after adding glycerol. Prepare working dilution prior to use and then discard. Be sure to mix well but without foaming.
Note	For research use only.
Clonality	Polyclonal
Purity	Affinity purified goat IgG
Dilution Range	1 : 50 000 - 1 : 90 000 (ELISA), 1 : 500 - 1 : 5000 (IHC), 1: 10 000 - 1 : 50 000 (WB)



Application Notes Additional Information: No reactivity is observed to non-immunoglobulin rabbit serum. Antibody is provided in: 10 mM Sodium Phosphate, 0.15 M Sodium Chloride, pH 7.2, 1% BSA (w/v), Protease IgG free, 0.1 % (v/v) Kathon CG. Affinity purified antibody is > 95 % pure, according to SDS-PAGE. This antibody is used on a very wide range of samples from various species including many model plants, algae and diatoms. Background: Goat anti-rabbit IgG (H&L) is a secondary antibody conjugated to HRP which binds to all rabbit IgGs in immunological assays. Reconstitution: For reconstitution add 1.1 ml of sterile water. Let it stand 30 minutes at room temperature to dissolve. Prepare fresh working dilutions daily.