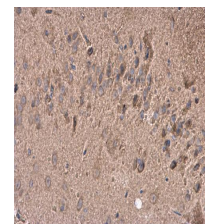


Product Datasheet

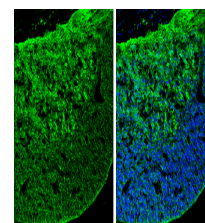
GABA antibody GRP155

Description	GABA antibody
Species/Host	Rabbit
Reactivity	Human, Mouse, Rat, Drosophila
Conjugation	Unconjugated
Tested Applications	DOT, ICC, IF, IHC-Fr, IHC-P
Immunogen	The immunogen used to generate this antibody corresponds to GABA
Form/Appearance	Liquid: 0.1M Tris, 0.1M Glycine, 20% Glycerol (pH7). 0.01% Thimerosal was added as a preservative.
Concentration	1 mg/ml
Storage	Store as concentrated solution. Centrifuge briefly prior to opening vial. For short-term storage (1-2 weeks), store at 4°C. For long-term storage, aliquot and store at -20°C or below. Avoid multiple freeze-thaw cycles.
Note	For research use only.
Isotype	IgG
Clonality	Polyclonal
Purity	Purified by antigen-affinity chromatography.
Dilution Range	ICC: 1:100-1:1000, IHC-P: 1:100-1:1000, IHC-Fr: 1:100-1:1000



GABA antibody detects GABA at cytoplasm in rat brain by immunohistochemical analysis.

Sample: Paraffin-embedded rat brain. GABA antibody (GRP607) diluted at 1:400. Antigen Retrieval: Citrate buffer, pH 6.0, 15 min



GABA antibody detects GABA by immunohistochemical analysis. Sample: Frozen sectioned E13.5 Rat brain. Green: GABA stained by GABA antibody (GRP607) diluted at 1:250. Blue: Fluoroshield with DAPI.