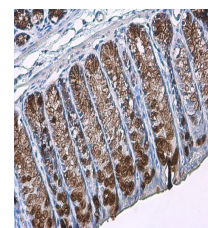


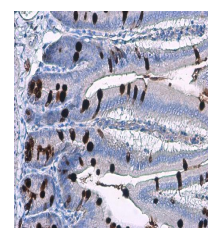
Product Datasheet

MUC2 antibody [C3], C-term GRP14

Description	This gene encodes a member of the mucin protein family. Mucins are high molecular weight glycoproteins produced by many epithelial tissues. The protein encoded by this gene is secreted and forms an insoluble mucous barrier that protects the gut lumen. The protein polymerizes into a gel of which 80% is composed of oligosaccharide side chains by weight. The protein features a central domain containing tandem repeats rich in threonine and proline that varies between 50 and 115 copies in different individuals. Downregulation of this gene has been observed in patients with Crohn disease and ulcerative colitis. [provided by RefSeq, Oct 2016]
Species/Host	Rabbit
Reactivity	Human, Mouse
Conjugation	Unconjugated
Tested Applications	ICC, IF, IHC-Fr, IHC-P
Immunogen	Carrier-protein conjugated synthetic peptide encompassing a sequence within the C-terminus region of human MUC2. The exact sequence is proprietary.
Form/Appearance	Liquid: 1XPBS, 1% BSA, 20% Glycerol (pH7). 0.025% ProClin 300 was added as a preservative.
Concentration	0.48 mg/ml
Storage	Store as concentrated solution. Centrifuge briefly prior to opening vial. For short-term storage (1-2 weeks), store at 4°C. For long-term storage, aliquot and store at -20°C or below. Avoid multiple freeze-thaw cycles.
Note	For research use only.
Isotype	IgG
Clonality	Polyclonal
Purity	Purified by antigen-affinity chromatography.
Uniprot ID	Q02817
Entrez	4583
Dilution Range	ICC: 1:100-1:1000,IHC-P: 1:100-1:1000



MUC2 antibody [C3], C-term detects secreted MUC2 protein by immunohistochemical analysis. Sample: Paraffin-embedded mouse colon. MUC2 stained by MUC2 antibody [C3], C-term (GRP466) diluted at 1:2000.



MUC2 antibody [C3], C-term detects secreted MUC2 protein by immunohistochemical analysis. Sample: Paraffin-embedded mouse intestine. MUC2 stained by MUC2 antibody [C3], C-term (GRP466) diluted at 1:2000.