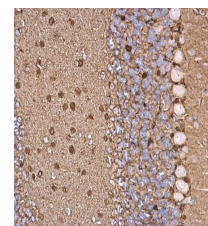


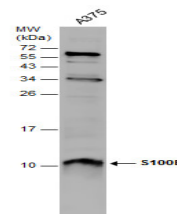
## Product Datasheet

### S100 beta antibody GRP158

|                            |  |
|----------------------------|--|
| <b>Description</b>         | The protein encoded by this gene is a member of the S100 family of proteins containing 2 EF-hand calcium-binding motifs. S100 proteins are localized in the cytoplasm and/or nucleus of a wide range of cells, and involved in the regulation of a number of cellular processes such as cell cycle progression and differentiation. S100 genes include at least 13 members which are located as a cluster on chromosome 1q21; however, this gene is located at 21q22.3. This protein may function in Neurite extension, proliferation of melanoma cells, stimulation of Ca <sup>2+</sup> fluxes, inhibition of PKC-mediated phosphorylation, astrocytosis and axonal proliferation, and inhibition of microtubule assembly. Chromosomal rearrangements and altered expression of this gene have been implicated in several neurological, neoplastic, and other types of diseases, including Alzheimer's disease, Down's syndrome, epilepsy, amyotrophic lateral sclerosis, melanoma, and type I diabetes. [provided by RefSeq, Jul 2008] |
| <b>Species/Host</b>        | Rabbit   |
| <b>Reactivity</b>          | Human, Mouse, Rat, Squirrel  |
| <b>Conjugation</b>         | Unconjugated   |
| <b>Tested Applications</b> | ICC, IF, IHC-Fr, IHC-P, WB   |
| <b>Immunogen</b>           | Full length human S100 beta Recombinant protein.   |
| <b>Form/Appearance</b>     | Liquid: 1XPBS, 20% Glycerol (pH7). 0.025% ProClin 300 was added as a preservative.   |
| <b>Concentration</b>       | 1.05 mg/ml   |
| <b>Storage</b>             | Store as concentrated solution. Centrifuge briefly prior to opening vial. For short-term storage (1-2 weeks), store at 4°C. For long-term storage, aliquot and store at -20°C or below. Avoid multiple freeze-thaw cycles.   |
| <b>Note</b>                | For research use only.   |
| <b>Isotype</b>             | IgG  |
| <b>Clonality</b>           | Polyclonal   |
| <b>Purity</b>              | Purified by antigen-affinity chromatography.   |
| <b>Uniprot ID</b>          | <b>P04271</b>  |
| <b>Entrez</b>              | <b>6285</b>  |
| <b>Dilution Range</b>      | WB: 1:500-1:3000, IHC-P: 1:100-1:1000, IHC-Fr: 1:100-1:1000  |



S100B antibody detects S100B protein at glial cell on mouse hind brain by immunohistochemical analysis.  
Sample: Paraffin-embedded mouse hind brain. S100B antibody (GRP610) dilution: 1:500.



Whole cell extract (30 µg) was separated by 15% SDS-PAGE, and the membrane was blotted with S100B antibody (GRP610) diluted at 1:500.