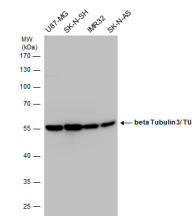


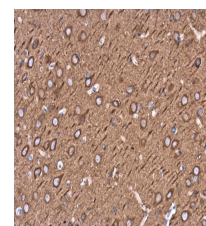
## Product Datasheet

### beta Tubulin 3/ Tuj1 antibody GRP160

<b>Description</b>	This gene encodes a class III member of the beta tubulin protein family. Beta tubulins are one of two core protein families (alpha and beta tubulins) that heterodimerize and assemble to form microtubules. This protein is primarily expressed in neurons and may be involved in neurogenesis and axon guidance and maintenance. Mutations in this gene are the cause of congenital fibrosis of the extraocular muscles type 3. Alternate splicing results in multiple transcript variants. A pseudogene of this gene is found on chromosome 6. [provided by RefSeq]
<b>Species/Host</b>	Rabbit
<b>Reactivity</b>	Human, Mouse, Rat
<b>Conjugation</b>	Unconjugated
<b>Tested Applications</b>	ICC, IF, IHC-Fr, IHC-P, IP, WB
<b>Immunogen</b>	Carrier-protein conjugated synthetic peptide encompassing a sequence within the center region of human beta Tubulin 3/ TUJ1. The exact sequence is proprietary.
<b>Form/Appearance</b>	Liquid: 1XPBS, 20% Glycerol (pH7). 0.025% ProClin 300 was added as a preservative.
<b>Concentration</b>	0.1 mg/ml
<b>Storage</b>	Store as concentrated solution. Centrifuge briefly prior to opening vial. For short-term storage (1-2 weeks), store at 4°C. For long-term storage, aliquot and store at -20°C or below. Avoid multiple freeze-thaw cycles.
<b>Note</b>	For research use only.
<b>Isotype</b>	IgG
<b>Clonality</b>	Polyclonal
<b>Purity</b>	Purified by antigen-affinity chromatography.
<b>Uniprot ID</b>	<b>Q13509</b>
<b>Entrez</b>	<b>10381</b>
<b>Dilution Range</b>	WB: 1:500-1:50000, ICC: 1:100-1:1000, IHC-P: 1:100-1:1000, IHC-Fr: 1:100-1:1000, IP: 1:100-1:500



beta Tubulin 3/ TUJ1 antibody detects beta Tubulin 3/ TUJ1 protein by western blot analysis. Various whole cell extracts (30 µg) were separated by 10% SDS-PAGE, and the membrane was blotted with beta Tubulin 3/ TUJ1 antibody (GRP612) diluted at a dilution



beta Tubulin 3/ TUJ1 antibody detects beta Tubulin 3/ TUJ1 protein at cytoplasm in rat brain by immunohistochemical analysis. Sample: Paraffin-embedded rat brain. beta Tubulin 3/ TUJ1 antibody (GRP612) diluted at 1:500.