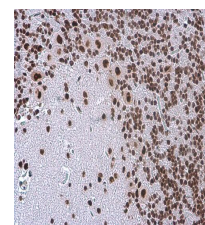


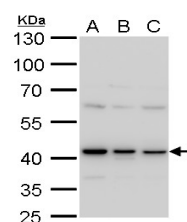
## Product Datasheet

### TDP43 antibody [GT225] GRP172

<b>Description</b>	HIV-1, the causative agent of acquired immunodeficiency syndrome (AIDS), contains an RNA genome that produces a chromosomally integrated DNA during the replicative cycle. Activation of HIV-1 gene expression by the transactivator Tat is dependent on an RNA regulatory element (TAR) located downstream of the transcription initiation site. The protein encoded by this gene is a transcriptional repressor that binds to chromosomally integrated TAR DNA and represses HIV-1 transcription. In addition, this protein regulates alternate splicing of the CFTR gene. A similar pseudogene is present on chromosome 20. [provided by RefSeq]
<b>Species/Host</b>	Mouse
<b>Reactivity</b>	Human, Mouse, Rat
<b>Conjugation</b>	Unconjugated
<b>Tested Applications</b>	ICC, IF, IHC-P, WB
<b>Immunogen</b>	Recombinant protein encompassing a sequence within the center region of human TDP43. The exact sequence is proprietary.
<b>Form/Appearance</b>	Liquid: PBS
<b>Concentration</b>	1 mg/ml
<b>Storage</b>	Store as concentrated solution. Centrifuge briefly prior to opening vial. For short-term storage (1-2 weeks), store at 4°C. For long-term storage, aliquot and store at -20°C or below. Avoid multiple freeze-thaw cycles.
<b>Note</b>	For research use only.
<b>Isotype</b>	IgG2b
<b>Clonality</b>	Monoclonal
<b>Purity</b>	Affinity purified by Protein G.
<b>Clone ID</b>	GT225
<b>Uniprot ID</b>	<a href="#">Q13148</a>
<b>Entrez</b>	<a href="#">23435</a>
<b>Dilution Range</b>	WB: 1:500-1:3000, ICC: 1:100-1:1000, IHC-P: 1:100-1:1000



TDP43 antibody [GT225] detects TDP43 protein at nucleus in rat brain by immunohistochemical analysis.  
Sample: Paraffin-embedded rat brain. TDP43 antibody [GT225] (GRP624) diluted at 1:200.



TARDBP antibody [GT225] detects TARDBP protein by western blot analysis. A. 30 µg 293T whole cell lysate/extract B. 30 µg A431 whole cell lysate/extract C. 30 µg HeLa whole cell lysate/extract 10% SDS-PAGE TARDBP antibody [GT225] (GRP624) dilution: