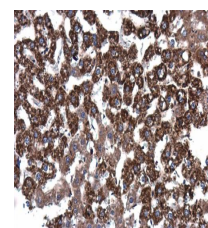


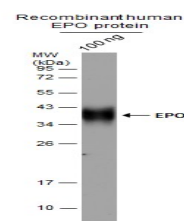
Product Datasheet

EPO antibody GRP16

Description	This gene is a member of the EPO/TPO family and encodes a secreted, glycosylated cytokine composed of four alpha helical bundles. The protein is found in the plasma and regulates red cell production by promoting erythroid differentiation and initiating hemoglobin synthesis. This protein also has neuroprotective activity against a variety of potential brain injuries and antiapoptotic functions in several tissue types. [provided by RefSeq]
Species/Host	Rabbit
Reactivity	Human, Rat
Conjugation	Unconjugated
Tested Applications	ELISA, IHC-P, WB
Immunogen	Recombinant protein encompassing a sequence within the center region of human EPO. The exact sequence is proprietary.
Form/Appearance	Liquid: 1XPBS, 20% Glycerol (pH7). 0.01% Thimerosal was added as a preservative.
Concentration	1 mg/ml
Storage	Store as concentrated solution. Centrifuge briefly prior to opening. For short-term storage (1-2 weeks), store at 4°C. For long-term storage, aliquot and store at -20°C or below. Avoid multiple freeze-thaw cycles.
Note	For research use only.
Isotype	IgG
Clonality	Polyclonal
Purity	Purified by antigen-affinity chromatography.
Uniprot ID	P01588
Entrez	2056
Dilution Range	WB: 1:5000-1:20000,IHC-P: 1:100-1:1000,ELISA: 1:1000-1:10000



EPO antibody detects EPO protein at cytoplasm in rat liver by immunohistochemical analysis. Sample: Paraffin-embedded rat liver. EPO antibody (GRP468) diluted at 1:400.



Recombinant human EPO protein (with glycosylation) expressed in CHO cells (100 ng) was separated by 12% SDS-PAGE, and the membrane was blotted with EPO antibody (GRP468) diluted at 1:10000.