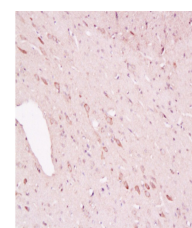


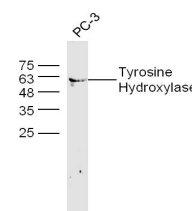
## Product Datasheet

### Tyrosine Hydroxylase Polyclonal Antibody GRP180

|                            |   |
|----------------------------|---|
| <b>Description</b>         | Neuronal Marker Tyrosine hydroxylase is involved in the conversion of tyrosine to dopamine. As the rate-limiting enzyme in the synthesis of catecholamines, tyrosine hydroxylase has a key role in the physiology of adrenergic neurons. Tyrosine hydroxylase is regularly used as a marker for dopaminergic neurons, which is particularly relevant for research into Parkinson's disease. |
| <b>Species/Host</b>        | Rabbit  |
| <b>Reactivity</b>          | Human, Mouse, Rat   |
| <b>Conjugation</b>         | Unconjugated  |
| <b>Tested Applications</b> | FC, IHC-P, WB   |
| <b>Immunogen</b>           | KLH conjugated synthetic peptide derived from human Tyrosine Hydroxylase (public_immunogen_range: 115-160/528)  |
| <b>Form/Appearance</b>     | Aqueous buffered solution containing 1% BSA, 50% glycerol and 0.09% sodium azide.   |
| <b>Concentration</b>       | 1µg/ul  |
| <b>Storage</b>             | Store at -20°C for 12 months.   |
| <b>Note</b>                | For research use only.  |
| <b>Isotype</b>             | IgG   |
| <b>Clonality</b>           | Polyclonal  |
| <b>Purity</b>              | Purified by Protein A.  |
| <b>Uniprot ID</b>          | <b>P07101</b>   |
| <b>Entrez</b>              | <b>7054</b>   |
| <b>Dilution Range</b>      | WB: 1:300-1000, FC: 1:20-100, IHC-P: 1:200-400  |



WB of GRP180



IHC-P of GRP180