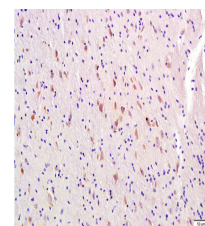


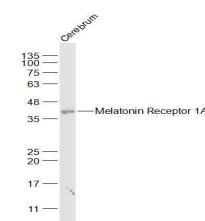
Product Datasheet

Melatonin Receptor 1A Antibody GRP184

Description	High affinity receptor for melatonin. Likely to mediate the reproductive and circadian actions of melatonin. The activity of this receptor is mediated by pertussis toxin sensitive G proteins that inhibit adenylate cyclase activity.
Species/Host	Rabbit
Reactivity	Human, Mouse, Rat, Bovine
Conjugation	Unconjugated
Tested Applications	IHC-P, WB
Immunogen	KLH conjugated synthetic peptide derived from human MTR-1A (public_immunogen_range: 209-242/350)
Form/Appearance	Aqueous buffered solution containing 1% BSA, 50% glycerol and 0.09% sodium azide.
Concentration	1ug/ul
Storage	Store at -20°C for 12 months.
Note	For research use only.
Isotype	IgG
Clonality	Polyclonal
Purity	Purified by Protein A.
Uniprot ID	P48039
Entrez	4543
Dilution Range	WB: 1:300-1000, IHC-P: 1:200-400



WB of GRP184



IHC-P of GRP184