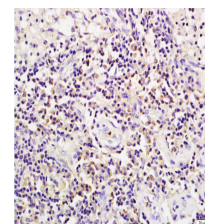


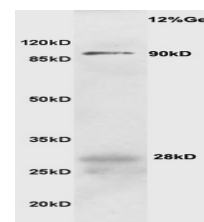
Product Datasheet

CD19 Polyclonal Antibody GRP192

Description	Assembles with the antigen receptor of B-lymphocytes in order to decrease the threshold for antigen receptor-dependent stimulation.
Species/Host	Rabbit
Reactivity	Human, Mouse, Rat
Conjugation	Unconjugated
Tested Applications	FC, IHC-P, WB
Immunogen	KLH conjugated synthetic peptide derived from rat CD19 (public_immunogen_range: 480-530/547)
Form/Appearance	Aqueous buffered solution containing 1% BSA, 50% glycerol and 0.09% sodium azide.
Concentration	1ug/ul
Storage	Store at -20°C for 12 months.
Note	For research use only.
Isotype	IgG
Clonality	Polyclonal
Purity	Purified by Protein A.
Uniprot ID	F1LNH2
Entrez	12478
Dilution Range	WB: 1:300-1000, FC: 1:20-100, IHC-P: 1:200-400



WB of GRP192



IHC-P of GRP192