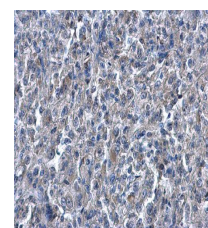


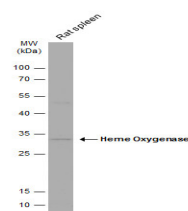
Product Datasheet

Heme Oxygenase 1 antibody GRP19

Description	Heme oxygenase, an essential enzyme in heme catabolism, cleaves heme to form biliverdin, which is subsequently converted to bilirubin by biliverdin reductase, and carbon monoxide, a putative neurotransmitter. Heme oxygenase activity is induced by its substrate heme and by various nonheme substances. Heme oxygenase occurs as 2 isozymes, an inducible heme oxygenase-1 and a constitutive heme oxygenase-2. HMOX1 and HMOX2 belong to the heme oxygenase family. [provided by RefSeq]
Species/Host	Rabbit
Reactivity	Human, Mouse, Rat, Monkey
Conjugation	Unconjugated
Tested Applications	ELISA, ICC, IF, IHC-P, WB
Immunogen	Recombinant protein encompassing a sequence within the center region of human Heme Oxygenase 1. The exact sequence is proprietary.
Form/Appearance	Liquid: 1XPBS, 20% Glycerol (pH7). 0.025% ProClin 300 was added as a preservative.
Concentration	0.99 mg/ml
Storage	Store as concentrated solution. Centrifuge briefly prior to opening vial. For short-term storage (1-2 weeks), store at 4°C. For long-term storage, aliquot and store at -20°C or below. Avoid multiple freeze-thaw cycles.
Note	For research use only.
Isotype	IgG
Clonality	Polyclonal
Purity	Purified by antigen-affinity chromatography.
Uniprot ID	P09601
Entrez	3162
Dilution Range	WB: 1:500-1:3000, ICC: 1:100-1:1000, IHC-P: 1:100-1:1000



Heme Oxygenase 1 antibody detects Heme Oxygenase 1 protein at cytoplasm of human renal carcinoma by immunohistochemical analysis.
Sample: Paraffin-embedded human renal carcinoma . Heme Oxygenase 1 antibody (GRP471) diluted at 1:500.



Mouse tissue extract (50 ?g) was separated by 12% SDS-PAGE, and the membrane was blotted with Heme Oxygenase 1 antibody (GRP471) diluted at 1:1000. The HRP-conjugated anti-rabbit IgG antibody was used to detect the primary antibody.