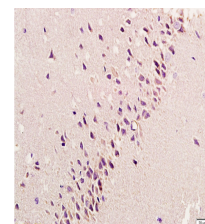


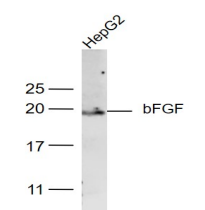
Product Datasheet

bFGF Polyclonal Antibody GRP223

Description	Plays an important role in the regulation of cell survival, cell division, angiogenesis, cell differentiation and cell migration. Functions as potent mitogen in vitro (By similarity).
Species/Host	Rabbit
Reactivity	Human, Mouse, Rat, Rabbit, Guinea Pig
Conjugation	Unconjugated
Tested Applications	ICC, IF, IHC-P, WB
Immunogen	KLH conjugated synthetic peptide derived from mouse bFGF (public_immunogen_range: 20-60/155)
Form/Appearance	Aqueous buffered solution containing 1% BSA, 50% glycerol and 0.09% sodium azide.
Concentration	1ug/ul
Storage	Store at -20°C for 12 months.
Note	For research use only.
Isotype	IgG
Clonality	Polyclonal
Purity	Purified by Protein A.
Uniprot ID	P15655
Entrez	14173
Dilution Range	WB: 1:300-1000, IHC-P: 1:200-400, IF: 1:50-200



WB of GRP223



IHC-P of GRP223