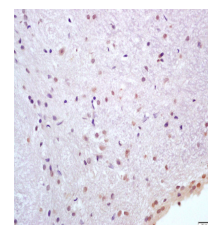


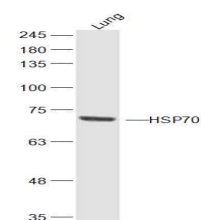
## Product Datasheet

### HSP70 1A/1B Polyclonal Antibody GRP225

<b>Description</b>	In cooperation with other chaperones, Hsp70s stabilize preexistent proteins against aggregation and mediate the folding of newly translated polypeptides in the cytosol as well as within organelles. These chaperones participate in all these processes through their ability to recognize nonnative conformations of other proteins. They bind extended peptide segments with a net hydrophobic character exposed by polypeptides during translation and membrane translocation, or following stress-induced damage. In case of rotavirus A infection, serves as a post-attachment receptor for the virus to facilitate entry into the cell.
<b>Species/Host</b>	Rabbit
<b>Reactivity</b>	Human, Mouse, Rat
<b>Conjugation</b>	Unconjugated
<b>Tested Applications</b>	IHC-P, WB
<b>Immunogen</b>	KLH conjugated synthetic peptide derived from human HSP70 1A/1B
<b>Form/Appearance</b>	Aqueous buffered solution containing 1% BSA, 50% glycerol and 0.09% sodium azide.
<b>Concentration</b>	1ug/ul
<b>Storage</b>	Store at -20°C for 12 months.
<b>Note</b>	For research use only.
<b>Isotype</b>	IgG
<b>Clonality</b>	Polyclonal
<b>Purity</b>	Purified by Protein A.
<b>Uniprot ID</b>	<b>P08107</b>
<b>Entrez</b>	<b>3303</b>
<b>Dilution Range</b>	WB: 1:300-1000, IHC-P: 1:200-400



WB of GRP225



IHC-P of GRP225