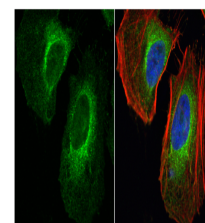


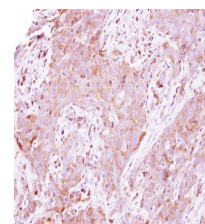
Product Datasheet

LDHA antibody GRP21

| | |
|----------------------------|---|
| Description | The protein encoded by this gene catalyzes the conversion of L-lactate and NAD to pyruvate and NADH in the final step of anaerobic glycolysis. The protein is found predominantly in muscle tissue and belongs to the lactate dehydrogenase family. Mutations in this gene have been linked to exertional myoglobinuria. Multiple transcript variants encoding different isoforms have been found for this gene. The human genome contains several non-transcribed pseudogenes of this gene. [provided by RefSeq] |
| Species/Host | Rabbit |
| Reactivity | Human, Mouse, Rat |
| Conjugation | Unconjugated |
| Tested Applications | ICC, IF, IHC-P, WB |
| Immunogen | Recombinant protein encompassing a sequence within the center region of human LDHA. The exact sequence is proprietary. |
| Form/Appearance | Liquid: 1XPBS, 1% BSA, 20% Glycerol (pH7). 0.025% ProClin 300 was added as a preservative. |
| Concentration | 0.48 mg/ml |
| Storage | Store as concentrated solution. Centrifuge briefly prior to opening vial. For short-term storage (1-2 weeks), store at 4°C. For long-term storage, aliquot and store at -20°C or below. Avoid multiple freeze-thaw cycles. |
| Note | For research use only. |
| Isotype | IgG |
| Clonality | Polyclonal |
| Purity | Purified by antigen-affinity chromatography. |
| Uniprot ID | P00338 |
| Entrez | 3939 |
| Dilution Range | WB: 1:500-1:3000, ICC: 1:100-1:1000, IHC-P: 1:100-1:1000 |



LDHA antibody detects LDHA protein at cytoplasm by immunofluorescent analysis. Sample: HeLa cells were fixed in 4% paraformaldehyde at RT for 15 min. Green: LDHA protein stained by LDHA antibody (GRP473) diluted at 1:200. Blue: Hoechst 33342 stain.



Immunohistochemical analysis of paraffin-embedded human lung papillary adenocarcinoma, using LDHA (GRP473) antibody at 1:500 dilution.