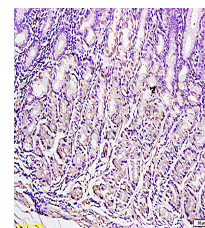


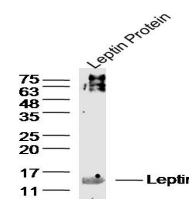
Product Datasheet

Leptin Polyclonal Antibody GRP235

Description	May function as part of a signaling pathway that acts to regulate the size of the body fat depot. An increase in the level of LEP may act directly or indirectly on the CNS to inhibit food intake and/or regulate energy expenditure as part of a homeostatic mechanism to maintain constancy of the adipose mass.
Species/Host	Rabbit
Reactivity	Human, Mouse, Rat, Bovine
Conjugation	Unconjugated
Tested Applications	IHC-P, WB
Immunogen	KLH conjugated synthetic peptide derived from bovine Leptin (public_immunogen_range: 1-50/167)
Form/Appearance	Aqueous buffered solution containing 1% BSA, 50% glycerol and 0.09% sodium azide.
Concentration	1ug/ul
Storage	Store at -20°C for 12 months.
Note	For research use only.
Isotype	IgG
Clonality	Polyclonal
Purity	Purified by Protein A.
Uniprot ID	P50595
Entrez	280836
Dilution Range	WB: 1:300-1000, IHC-P: 1:200-400



WB of GRP235



IHC-P of GRP235