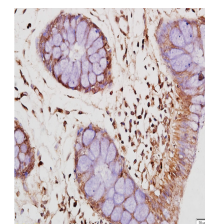


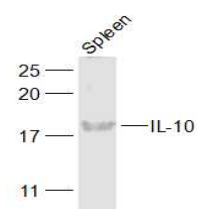
Product Datasheet

IL-10 Polyclonal Antibody GRP289

Description	Inhibits the synthesis of a number of cytokines, including IFN-gamma, IL-2, IL-3, TNF and GM-CSF produced by activated macrophages and by helper T-cells.
Species/Host	Rabbit
Reactivity	Human, Mouse, Rat, Chicken
Conjugation	Unconjugated
Tested Applications	ELISA, IHC-P, WB
Immunogen	KLH conjugated synthetic peptide derived from mouse IL-10 (public_immunogen_range: 135-178/178)
Form/Appearance	Aqueous buffered solution containing 1% BSA, 50% glycerol and 0.09% sodium azide.
Concentration	1ug/ul
Storage	Store at -20°C for 12 months.
Note	For research use only.
Isotype	IgG
Clonality	Polyclonal
Purity	Purified by Protein A.
Uniprot ID	P18893
Entrez	16153
Dilution Range	WB: 1:300-1000, ELISA: 1:500-1000, IHC-P: 1:200-400



WB of GRP289



IHC-P of GRP289