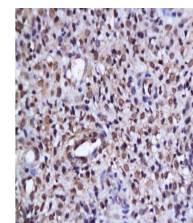


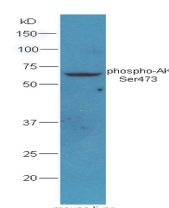
Product Datasheet

AKT1/2/3 (Ser472/Ser473/Ser474) Antibody GRP316

| | |
|----------------------------|--|
| Description | AKT1-specific substrates have been recently identified, including palladin (PALLD), which phosphorylation modulates cytoskeletal organization and cell motility; prohibitin (PHB), playing an important role in cell metabolism and proliferation; and CDKN1A, for which phosphorylation at 'Thr-145' induces its release from CDK2 and cytoplasmic relocalization. These recent findings indicate that the AKT1 isoform has a more specific role in cell motility and proliferation. Phosphorylates CLK2 thereby controlling cell survival to ionizing radiation. |
| Species/Host | Rabbit |
| Reactivity | Human, Mouse, Rat |
| Conjugation | Unconjugated |
| Tested Applications | IHC-P, WB |
| Immunogen | KLH conjugated synthetic phosphopeptide derived from human AKT1 around the phosphorylation site of Ser473 (public_immunogen_range: 450-480/480) |
| Form/Appearance | Aqueous buffered solution containing 1% BSA, 50% glycerol and 0.09% sodium azide. |
| Concentration | 1ug/ul |
| Storage | Store at -20°C for 12 months. |
| Note | For research use only. |
| Isotype | IgG |
| Clonality | Polyclonal |
| Purity | Purified by Protein A. |
| Uniprot ID | P47196 |
| Entrez | 24185 |
| Dilution Range | WB: 1:300-1000, IHC-P: 1:200-400 |



WB of GRP316



IHC-P of GRP316