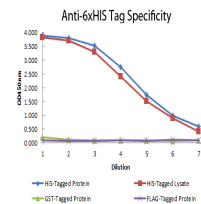


## Product Datasheet

# 6X HIS EPI TOPE TAG (MOUSE) Monoclonal Antibody GRP2110

<b>Description</b>	Anti-6X HIS EPI TOPE TAG (MOUSE) Monoclonal Antibody
<b>Species/Host</b>	Mouse
<b>Conjugation</b>	Unconjugated
<b>Tested Applications</b>	ELISA, IHC-P, WB
<b>Form/Appearance</b>	0.02 M Potassium Phosphate, 0.15 M Sodium Chloride, pH 7.2
<b>Concentration</b>	1.0 mg/ml
<b>Note</b>	For research use only.
<b>Isotype</b>	IgG1
<b>Clonality</b>	Monoclonal
<b>Source</b>	6X HIS antibody was produced in mice by repeated immunizations with 6X His epitope tag peptide H-H-H-H-H-H conjugated to KLH using maleimide.
<b>Clone ID</b>	33D10.D2.G8
<b>Dilution Range</b>	ELISA: 1:20,000 - 1:100,000, Immunochemistry: User Optimized, Western Blot: 1:2,000 - 1:10,000



Anti-6x-His Epitope Tag Monoclonal Antibody - ELISA