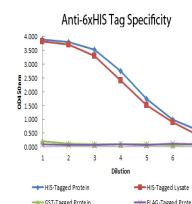


Product Datasheet

6X HIS EPI TOPE TAG (MOUSE) Monoclonal Antibody Biotin Conjugated GRP2226

Description	Anti-6X HIS EPI TOPE TAG (MOUSE) Monoclonal Antibody Biotin Conjugated
Species/Host	Mouse
Conjugation	Biotin
Tested Applications	ELISA, IHC-P, WB
Form/Appearance	0.02 M Potassium Phosphate, 0.15 M Sodium Chloride, pH 7.2
Concentration	1.0 mg/mL
Note	For research use only.
Isotype	IgG1
Clonality	Monoclonal
Source	This antibody was produced in mice by repeated immunizations with 6X His epitope tag peptide H-H-H-H-H-H conjugated to KLH using maleimide.
Clone ID	33D10.D2.G8
Dilution Range	ELISA: 1:50,000 - 1:175,000, Fluorochrome: 10-20, Immunochemistry: 1:1,000 - 1:5,000, Western Blot: 1:2,000 - 1:10,000



ELISA - 6x HIS
Monoclonal
Antibody Biotin Conjugated