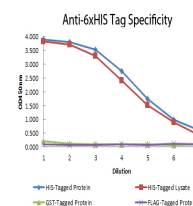


## Product Datasheet

# 6X HIS EPITOPE TAG (MOUSE) Monoclonal ATTO 550 Conjugated Antibody GRP2252

<b>Description</b>	Anti-6X HIS EPITOPE TAG (MOUSE) Monoclonal ATTO 550 Conjugated Antibody
<b>Species/Host</b>	Mouse
<b>Conjugation</b>	ATTO-550
<b>Tested Applications</b>	IF, IHC-P, WB
<b>Form/Appearance</b>	0.02 M Potassium Phosphate, 0.15 M Sodium Chloride, pH 7.2
<b>Concentration</b>	1.0 mg/mL
<b>Note</b>	For research use only.
<b>Isotype</b>	IgG1
<b>Clonality</b>	Monoclonal
<b>Source</b>	HIS Tag antibody was produced in mice by repeated immunizations with 6X His epitope tag peptide H-H-H-H-H-H conjugated to KLH using maleimide.
<b>Clone ID</b>	33D10.D2.G8
<b>Dilution Range</b>	FLISA: >1:20,000, Fluorochrome: 1.0, IF Microscopy: >1:5,000, Western Blot: >1:10,000



Anti-6x-His Epitope Tag  
Monoclonal Antibody -  
ELISA