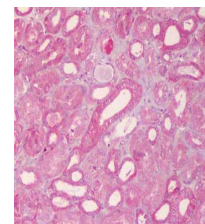


Product Datasheet

ABCB1 (RABBIT) Antibody GRP3565

Description	Anti-ABCB1 (RABBIT) Antibody
Species/Host	Rabbit
Reactivity	Human
Conjugation	Unconjugated
Tested Applications	ELISA, IHC-P, WB
Form/Appearance	0.02 M Potassium Phosphate, 0.15 M Sodium Chloride, pH 7.2
Concentration	1.0 mg/mL
Note	For research use only.
Isotype	IgG
Clonality	Polyclonal
Source	This affinity purified antibody was prepared from whole rabbit serum produced by repeated immunizations with a synthetic peptide corresponding to an internal region near amino acids 255-280 of human ABCB1 protein.
Uniprot ID	P08183
Entrez	5243
Dilution Range	ELISA: 1:10,000 - 1:50,000,Immunochemistry: User Optimized,Western Blot: 1:200 - 1:2,000
Application Notes	This affinity purified antibody has been tested for use in ELISA and western blot.



Anti-ABCB1 Antibody -
IHC