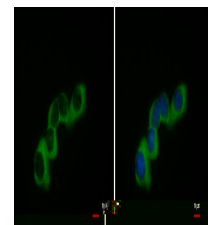


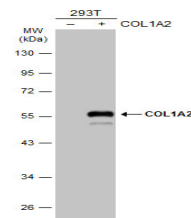
Product Datasheet

COL1A2 antibody [C2C3], C-term GRP31

Description	This gene encodes the pro-alpha2 chain of type I collagen whose triple helix comprises two alpha1 chains and one alpha2 chain. Type I is a fibril-forming collagen found in most connective tissues and is abundant in bone, cornea, dermis and tendon. Mutations in this gene are associated with osteogenesis imperfecta types I-IV, Ehlers-Danlos syndrome type VIIB, recessive Ehlers-Danlos syndrome Classical type, idiopathic osteoporosis, and atypical Marfan syndrome. Symptoms associated with mutations in this gene, however, tend to be less severe than mutations in the gene for the alpha1 chain of type I collagen (COL1A1) reflecting the different role of alpha2 chains in matrix integrity. Three transcripts, resulting from the use of alternate polyadenylation signals, have been identified for this gene. [provided by R. Dalgleish]
Species/Host	Rabbit
Reactivity	Human, Mouse
Conjugation	Unconjugated
Tested Applications	ICC, IF, WB
Immunogen	Recombinant protein encompassing a sequence within the C-terminus region of human COL1A2. The exact sequence is proprietary.
Form/Appearance	Liquid: 1XPBS, 1% BSA, 20% Glycerol (pH7). 0.025% ProClin 300 was added as a preservative.
Concentration	0.45 mg/ml
Storage	Store as concentrated solution. Centrifuge briefly prior to opening vial. For short-term storage (1-2 weeks), store at 4°C. For long-term storage, aliquot and store at -20°C or below. Avoid multiple freeze-thaw cycles.
Note	For research use only.
Isotype	IgG
Clonality	Polyclonal
Purity	Purified by antigen-affinity chromatography.
Uniprot ID	P08123
Entrez	1278
Dilution Range	WB: 1:1000-1:10000, ICC: 1:100-1:1000



COL1A2 antibody [C2C3], C-term detects COL1A2 protein at cytoplasm by immunofluorescent analysis. Sample: NIH-3T3 cells were fixed in ice-cold MeOH for 5 min. Green: COL1A2 protein stained by COL1A2 antibody [C2C3], C-term (GRP483) diluted at 1:500. Blue: Ho



Non-transfected (-) and transfected (+) 293T whole cell extracts (30 µg) were separated by 10% SDS-PAGE, and the membrane was blotted with COL1A2 antibody [C2C3], C-term (GRP483) diluted at 1:5000.