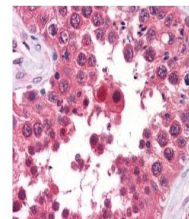


Product Datasheet

Aha1 (RAT) Monoclonal Antibody GRP2706

| | |
|----------------------------|---|
| Description | Anti-Aha1 (RAT) Monoclonal Antibody |
| Species/Host | Rat |
| Reactivity | Human |
| Conjugation | Unconjugated |
| Tested Applications | ELISA, IHC-P, WB |
| Form/Appearance | 0.02 M Potassium Phosphate, 0.15 M Sodium Chloride, pH 7.2 |
| Concentration | 1.0 mg/mL |
| Note | For research use only. |
| Isotype | IgG2a |
| Clonality | Monoclonal |
| Source | This Protein G purified monoclonal antibody was produced in rats by repeated immunizations with full length recombinant mouse AHA1 protein followed by hybridoma development. |
| Clone ID | 25F2.D9 |
| Uniprot ID | Q8BK64 |
| Entrez | 10000 |
| Dilution Range | ELISA: 1:20,000,Immunochemistry: 5-10 µg /mL,Western Blot: 1:1,000 |



Anti-AHA1 Monoclonal Antibody
- Immunohistochemistry