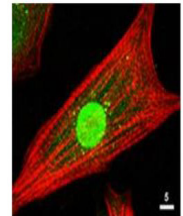


## Product Datasheet

### AKT (RABBIT) Antibody GRP1533

<b>Species/Host</b>	Rabbit
<b>Reactivity</b>	Human, Mouse, Rat, Chicken
<b>Conjugation</b>	Unconjugated
<b>Tested Applications</b>	ELISA, FC, IF, IHC-P, WB
<b>Form/Appearance</b>	0.02 M Potassium Phosphate, 0.15 M Sodium Chloride, pH 7.2
<b>Concentration</b>	85 mg/mL
<b>Note</b>	For research use only.
<b>Isotype</b>	Antiserum
<b>Clonality</b>	Polyclonal
<b>Purity</b>	This product was prepared from monospecific antiserum by a delipidation and defibrination. Pan Anti-AKT Antibody reacts with the AKT from human tissues. Based on sequence we expect this antibody to react as well with rat, mouse, and chicken AKT.
<b>Uniprot ID</b>	<b>P31749</b>
<b>Entrez</b>	<b>207</b>
<b>Dilution Range</b>	ELISA: 1:2,000 - 1:10,000, Flow Cytometry: User Optimized, Immunochemistry: 1:500 - 1:2,000, IF Microscopy: 1:100 - 1:1,000, Western Blot: 1:500 - 1:2,000



Anti-AKT Antibody -  
Immunofluorescence  
Microscopy