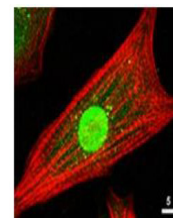


Product Datasheet

AKT (RABBIT) Antibody GRP1534

Species/Host	Rabbit
Reactivity	Human, Mouse, Rat, Chicken
Conjugation	Unconjugated
Tested Applications	ELISA, FC, IF, IHC-P, WB
Form/Appearance	0.02 M Potassium Phosphate, 0.15 M Sodium Chloride, pH 7.2
Concentration	75 mg/ml
Note	For research use only.
Isotype	Antiserum
Clonality	Polyclonal
Purity	This product was prepared from monospecific antiserum by a delipidation and defibrination. Pan Anti-AKT Antibody reacts with the AKT from human tissues. Based on sequence we expect this antibody to react as well with rat, mouse, and chicken AKT.
Uniprot ID	P31749
Entrez	207
Dilution Range	ELISA: 1:2,000 - 1:10,000, Flow Cytometry: User Optimized, Immunochemistry: 1:500 - 1:2,000, IF Microscopy: 1:100 - 1:1,000, Western Blot: 1:500 - 1:2,000



Anti-AKT Antibody -
Immunofluorescence
Microscopy