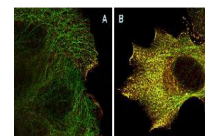


Product Datasheet

AKT pS473 (MOUSE) Monoclonal Antibody GRP2100

Description	Anti-AKT pS473 (MOUSE) Monoclonal Antibody
Species/Host	Mouse
Reactivity	Human, Mouse
Conjugation	Unconjugated
Tested Applications	ELISA, FC, IF, IHC-P, WB
Form/Appearance	0.02 M Potassium Phosphate, 0.15 M Sodium Chloride, pH 7.2
Concentration	1.0 mg/mL
Note	For research use only.
Isotype	IgG1
Clonality	Monoclonal
Source	This monoclonal antibody was produced by repeated immunizations with a synthetic peptide corresponding to residues surrounding S473 of human AKT1 protein.
Clone ID	17F6.B11
Uniprot ID	P31749
Entrez	207
Dilution Range	ELISA: 1:20,000, Flow Cytometry: User Optimized, Immunocytochemistry: 20 µg /ml, IF Microscopy: 1:500 - 1:3,000, Western Blot: 1:500 - 1:3,000



Anti-AKTpS473 Antibody -
STED
Nanoscopy