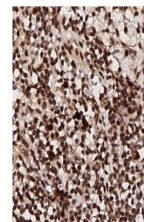


## Product Datasheet

### AKT pT308 (RABBIT) Antibody GRP3372

<b>Description</b>	Anti-AKT pT308 (RABBIT) Antibody
<b>Species/Host</b>	Rabbit
<b>Reactivity</b>	Human, Mouse, Rat
<b>Conjugation</b>	Unconjugated
<b>Tested Applications</b>	ELISA, FC, IHC-P, WB
<b>Form/Appearance</b>	0.02 M Potassium Phosphate, 0.15 M Sodium Chloride, pH 7.2
<b>Concentration</b>	1.0 mg/mL
<b>Note</b>	For research use only.
<b>Isotype</b>	IgG
<b>Clonality</b>	Polyclonal
<b>Source</b>	Anti-AKT pT308 polyclonal antibody was produced by repeated immunizations with a phosphorylated synthetic peptide corresponding to residues surrounding threonine 308 of human AKT1 protein.
<b>Uniprot ID</b>	<b>P31749</b>
<b>Entrez</b>	<b>207</b>
<b>Dilution Range</b>	ELISA: 1:15,000, Flow Cytometry: User Optimized, Immunocytochemistry: 1:200, Western Blot: 1:1000
<b>Application Notes</b>	AKT antibody is phospho specific for pT308 and is suitable for western blotting, immunohistochemistry, dot blot, Flow Cytometry, and ELISA.



Immunohistochemistry of  
Rabbit  
Anti-AKT pT308 Antibody